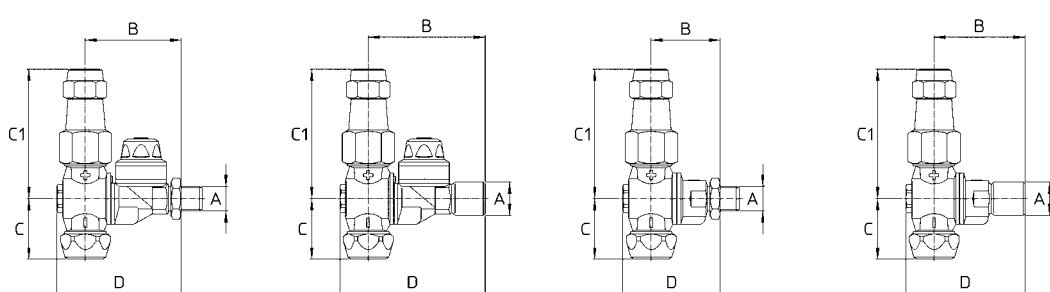


M82 - M72

**POSIZIONAMENTO
E TENUTA SENZA COLLANTI
ADJUST NOZZLE POSITION
AND SEAL WITHOUT BONDING**



Standard: lato regolabile con ghiera Ch20 G3/8F. e ugello AMT Ø15
Lato fisso con ghiera M75 Ø15 75.605.46 o kit ghiera AD / AC per ugelli Kit Ø15, ATR / TVI e AD/AC ALBUZ ®
Versioni con attacco G1/4M.: dado G1/4F. con O Ring NBR
Versioni con attacco G3/8M. - G1/8F.: dado G3/8F.
Versioni 82.617.68 G1/4M. con tenute in FPM
Versione 82.617.18 SU G1/4M. senza ugello nel lato regolabile

Pressione di esercizio max.: 40 bar
 Peso: M82: G1/4M. 340 g - G3/8M. 355 g - G1/4F. 340 g
 M72: G1/4M. 275 g - G3/8M. 290 g - G1/4F. 275 g
Materiali: ottone - acciaio inox - NBR - PVC - FPM
Impiego: su atomizzatori. Il lato regolabile consente il trattamento di colture ad alto fusto. Due ugelli selezionabili con posizioni intermedie di chiusura. Compatibile con ugelli AMT Ø15, ATR / TVI, AD/AC ALBUZ ®. Due posizioni di spruzzo inclinate di 20°. Posizioni segnalate da uno scatto. M82 con antigoccia resistente ed efficace in un ampio range di pressioni. Versioni G1/4M. fornite con dado e O Ring per il montaggio orientato del getto sui collettori senza utilizzare collanti.

**Standard: adjustable side supplied with 3/8\"/>
Fixed spray angle side with M75 Ø15 75.605.46 or AD / AC caps to assemble Ø15 kit, ATR / TVI or AD / AC ALBUZ ® spray tips
**1/4\"/>
**3/8\"/>
**82.617.68 1/4\"/>
82.617.18 SU 1/4\"/>********

Max. operating pressure: 40 bar / 580 psi
 Weight: M82: G1/4M. 340 g / 12 oz - G3/8M. 355 g / 12.5 oz - G1/4F. 340 g / 12 oz
 M72: G1/4M. 275 g / 9.5 oz - G3/8M. 290 g / 10 oz - G1/4F. 275 g / 9.5 oz
Materials: brass - stainless steel - Buna N - PVC - FKM
Use: on air blast sprayers. The adjustable side allows spray pattern variation for high trees coverage. Rollover to select spray tips with two shut off positions. Improved spray tip configuration: fits Ø15 AMT, ATR / TVI and AD / AC ALBUZ ® spray tips. Two "OPEN" positions at ±20° from vertical. A click point out each position. M82 models fitted with check valve that assures efficient and long lasting operations in a wide range of pressures. 1/4" BSPM. boom connection models supplied with nut and O Ring to adjust nozzle position on booms without bonding.

M82 COME SI ORDINA / HOW TO ORDER

| CODICE code | GHIERA LATO FISSO fixed side cap | FORO UGELLO spray tip hole mm | | PER UGELLI for spray tips | | A | B mm | C mm | C1 mm | D mm | KIT RICAMBIO spare parts kit |
|----------------|-------------------------------------|----------------------------------|-----------------|------------------------------|--|----|---------|---------|----------|---------|---------------------------------|
| | | REGOLABILE adjustable | FISSO fixed | REGOLABILE adjustable | FISSO fixed | | | | | | |
| 82.617.18 | Ø15 | Ø15 | Ø15 kit ATR/TVI | Ø15 kit ATR/TVI | G1/4M. 1/4" BSPM | 51 | 32 | 68 | 66 | 10 | 75.302.28 |
| 82.617.18 10 | Ø15 | Ø10 | Ø15 kit ATR/TVI | Ø15 kit ATR/TVI | | | | | | | |
| 82.617.18 12 | Ø15 | Ø12 | Ø15 kit ATR/TVI | Ø15 kit ATR/TVI | | | | | | | |
| 82.617.18 18 | Ø15 | Ø18 | Ø15 kit ATR/TVI | Ø15 kit ATR/TVI | | | | | | | |
| 82.617.18 20 | Ø15 | Ø20 | Ø15 kit ATR/TVI | Ø15 kit ATR/TVI | | | | | | | |
| 82.617.18 D | AD / AC | Ø15 | AD/AC | AD/AC | | | | | | | |
| 82.617.18 DA | AD / AC | Ø10 | AD/AC | AD/AC | | | | | | | |
| 82.617.18 DB | AD / AC | Ø12 | AD/AC | AD/AC | | | | | | | |
| 82.617.18 DC | AD / AC | Ø18 | AD/AC | AD/AC | | | | | | | |
| 82.617.18 DD | AD / AC | Ø20 | AD/AC | AD/AC | | | | | | | |
| 82.617.18 SU | Ø15 | - | Ø15 kit ATR/TVI | | | | | | | | |
| 82.617.68 | Ø15 | Ø15 | Ø15 kit ATR/TVI | Ø15 kit ATR/TVI | G1/4M. 1/4" BSPM | 51 | 32 | 68 | 66 | 10 | 90.302.59 |
| 82.617.68 10 | Ø15 | Ø10 | Ø15 kit ATR/TVI | Ø15 kit ATR/TVI | | | | | | | |
| 82.617.68 12 | Ø15 | Ø12 | Ø15 kit ATR/TVI | Ø15 kit ATR/TVI | | | | | | | |
| 82.617.68 18 | Ø15 | Ø18 | Ø15 kit ATR/TVI | Ø15 kit ATR/TVI | | | | | | | |
| 82.617.68 20 | Ø15 | Ø20 | Ø15 kit ATR/TVI | Ø15 kit ATR/TVI | | | | | | | |
| 82.617.68 D | AD / AC | Ø15 | AD/AC | AD/AC | | | | | | | |
| 82.617.68 DA | AD / AC | Ø10 | AD/AC | AD/AC | | | | | | | |
| 82.617.68 DB | AD / AC | Ø12 | AD/AC | AD/AC | | | | | | | |
| 82.617.68 DC | AD / AC | Ø18 | AD/AC | AD/AC | | | | | | | |
| 82.617.68 DD | AD / AC | Ø20 | AD/AC | AD/AC | | | | | | | |
| 82.617.5 | Ø15 | Ø15 | Ø15 kit ATR/TVI | Ø15 kit ATR/TVI | G3/8M.-G1/8F. 3/8" BSPM.-1/8" BSPF. | 51 | 32 | 68 | 66 | 10 | 90.302.59 |
| 82.617.5 10 | Ø15 | Ø10 | Ø15 kit ATR/TVI | Ø15 kit ATR/TVI | | | | | | | |
| 82.617.5 12 | Ø15 | Ø12 | Ø15 kit ATR/TVI | Ø15 kit ATR/TVI | | | | | | | |
| 82.617.5 18 | Ø15 | Ø18 | Ø15 kit ATR/TVI | Ø15 kit ATR/TVI | | | | | | | |
| 82.617.5 20 | Ø15 | Ø20 | Ø15 kit ATR/TVI | Ø15 kit ATR/TVI | | | | | | | |
| 82.617.5 D | AD / AC | Ø15 | AD/AC | AD/AC | | | | | | | |
| 82.617.5 DA | AD / AC | Ø10 | AD/AC | AD/AC | | | | | | | |
| 82.617.5 DB | AD / AC | Ø12 | AD/AC | AD/AC | | | | | | | |
| 82.617.5 DC | AD / AC | Ø18 | AD/AC | AD/AC | | | | | | | |
| 82.617.5 DD | AD / AC | Ø20 | AD/AC | AD/AC | | | | | | | |
| 82.617.19 | Ø15 | Ø15 | Ø15 kit ATR/TVI | Ø15 kit ATR/TVI | G3/8M.-G1/8F. 3/8" BSPM.-1/8" BSPF. | 51 | 32 | 68 | 66 | 10 | 75.302.28 |
| 82.617.19 10 | Ø15 | Ø10 | Ø15 kit ATR/TVI | Ø15 kit ATR/TVI | | | | | | | |
| 82.617.19 12 | Ø15 | Ø12 | Ø15 kit ATR/TVI | Ø15 kit ATR/TVI | | | | | | | |
| 82.617.19 18 | Ø15 | Ø18 | Ø15 kit ATR/TVI | Ø15 kit ATR/TVI | | | | | | | |
| 82.617.19 20 | Ø15 | Ø20 | Ø15 kit ATR/TVI | Ø15 kit ATR/TVI | | | | | | | |
| 82.617.19 D | AD / AC | Ø15 | AD/AC | AD/AC | | | | | | | |
| 82.617.19 DA | AD / AC | Ø10 | AD/AC | AD/AC | | | | | | | |
| 82.617.19 DB | AD / AC | Ø12 | AD/AC | AD/AC | | | | | | | |
| 82.617.19 DC | AD / AC | Ø18 | AD/AC | AD/AC | | | | | | | |
| 82.617.19 DD | AD / AC | Ø20 | AD/AC | AD/AC | | | | | | | |
| 82.617.20 | Ø15 | Ø15 | Ø15 kit ATR/TVI | Ø15 kit ATR/TVI | G1/4F. 1/4" BSPF. | 62 | 32 | 68 | 77 | 10 | 75.302.28 |
| 82.617.20 10 | Ø15 | Ø10 | Ø15 kit ATR/TVI | Ø15 kit ATR/TVI | | | | | | | |
| 82.617.20 12 | Ø15 | Ø12 | Ø15 kit ATR/TVI | Ø15 kit ATR/TVI | | | | | | | |
| 82.617.20 18 | Ø15 | Ø18 | Ø15 kit ATR/TVI | Ø15 kit ATR/TVI | | | | | | | |
| 82.617.20 20 | Ø15 | Ø20 | Ø15 kit ATR/TVI | Ø15 kit ATR/TVI | | | | | | | |
| 82.617.20 D | AD / AC | Ø15 | AD/AC | AD/AC | | | | | | | |
| 82.617.20 DA | AD / AC | Ø10 | AD/AC | AD/AC | | | | | | | |
| 82.617.20 DB | AD / AC | Ø12 | AD/AC | AD/AC | | | | | | | |
| 82.617.20 DC | AD / AC | Ø18 | AD/AC | AD/AC | | | | | | | |
| 82.617.20 DD | AD / AC | Ø20 | AD/AC | AD/AC | | | | | | | |

M72 COME SI ORDINA / HOW TO ORDER

| CODICE code | GHIERA LATO FISSO fixed side cap | FORO UGELLO spray tip hole mm | | PER UGELLI for spray tips | | A | B mm | C mm | C1 mm | D mm | KIT RICAMBIO spare parts kit |
|----------------|-------------------------------------|----------------------------------|-----------------|------------------------------|--|----|---------|---------|----------|---------|---------------------------------|
| | | REGOLABILE adjustable | FISSO fixed | REGOLABILE adjustable | FISSO fixed | | | | | | |
| 72.610.7 | Ø15 | Ø15 | Ø15 kit ATR/TVI | Ø15 kit ATR/TVI | G1/4M. 1/4" BSPM | 37 | 32 | 68 | 52 | 10 | 70.302.27 |
| 72.610.7 10 | Ø15 | Ø10 | Ø15 kit ATR/TVI | Ø15 kit ATR/TVI | | | | | | | |
| 72.610.7 12 | Ø15 | Ø12 | Ø15 kit ATR/TVI | Ø15 kit ATR/TVI | | | | | | | |
| 72.610.7 18 | Ø15 | Ø18 | Ø15 kit ATR/TVI | Ø15 kit ATR/TVI | | | | | | | |
| 72.610.7 20 | Ø15 | Ø20 | Ø15 kit ATR/TVI | Ø15 kit ATR/TVI | | | | | | | |
| 72.610.8 | Ø15 | Ø15 | Ø15 kit ATR/TVI | Ø15 kit ATR/TVI | G3/8M.-G1/8F. 3/8" BSPM.-1/8" BSPF. | 37 | 32 | 68 | 52 | 10 | 70.302.27 |
| 72.610.8 10 | Ø15 | Ø10 | Ø15 kit ATR/TVI | Ø15 kit ATR/TVI | | | | | | | |
| 72.610.8 12 | Ø15 | Ø12 | Ø15 kit ATR/TVI | Ø15 kit ATR/TVI | | | | | | | |
| 72.610.8 18 | Ø15 | Ø18 | Ø15 kit ATR/TVI | Ø15 kit ATR/TVI | | | | | | | |
| 72.610.8 20 | Ø15 | Ø20 | Ø15 kit ATR/TVI | Ø15 kit ATR/TVI | | | | | | | |
| 72.610.9 | Ø15 | Ø15 | Ø15 kit ATR/TVI | Ø15 kit ATR/TVI | G1/4F. 1/4" BSPF. | 48 | 32 | 68 | 63 | 10 | 70.302.27 |
| 72.610.9 10 | Ø15 | Ø10 | Ø15 kit ATR/TVI | Ø15 kit ATR/TVI | | | | | | | |
| 72.610.9 12 | Ø15 | Ø12 | Ø15 kit ATR/TVI | Ø15 kit ATR/TVI | | | | | | | |
| 72.610.9 18 | Ø15 | Ø18 | Ø15 kit ATR/TVI | Ø15 kit ATR/TVI | | | | | | | |
| 72.610.9 20 | Ø15 | Ø20 | Ø15 kit ATR/TVI | Ø15 kit ATR/TVI | | | | | | | |



RICAMBI SPARE PARTS :

72.610.7
72.610.8
72.610.9

82.617.5
82.617.18
82.617.18SU

82.617.19
82.617.20