

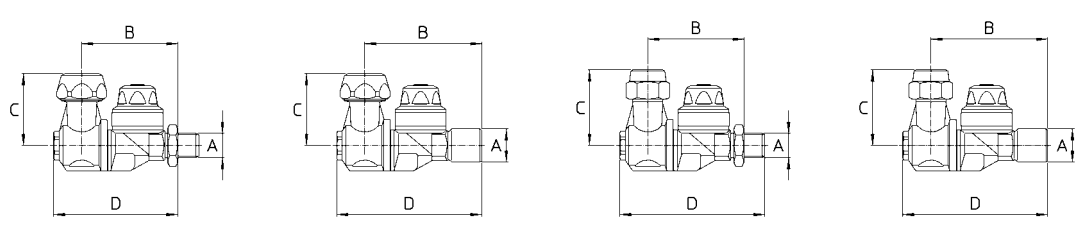


# M76

**POSIZIONAMENTO E TENUTA SENZA COLLANTI  
ADJUST NOZZLE POSITION AND SEAL WITHOUT BONDING**



76.617.32 15 | 76.617.31 15 | 76.617.36 15 | G1/4M.-1/4" BSPM Dado con O Ring Nut with O Ring  
76.617.29 | 76.617.30 | 76.617.37 76.617.40 | 76.617.69  
Kit ghiera AD/AC AD/AC cap kit | 75.605.46 Ø15 75.605.47 Ø18 | 73.605.27 G3/8 3/8" BSPF 73.605.28 11/16-16 UN | 256.605.7 G3/8 3/8" BSPF | 73.605.68 11/16-16 UN



**Standard:** versioni Ø18 e Ø15 complete di ghiera - ugello non compreso  
versioni G3/8 e 11/16-16UN complete di ghiera - ugello non compreso- opzioni con filtro

Pressione di esercizio max.: 40 bar  
Peso: G1/4M. 230 g - G1/4F. 230 g - G3/8M. 245 g - 1/4"NPTF. 230 g

**Materiali:** ottone - acciaio inox - NBR - FPM - PVC  
**Impiego:** su atomizzatori. Due posizioni "APERTO" inclinate 15° dalla verticale. Ogni posizione è segnalata da uno scatto. Antigoccia resistente ed efficace a bassa e ad alta pressione.

**Standard:** Ø18 and Ø15 models with cap - spray tip not included  
3/8"BSP and 11/16-16UN models with cap - spray tip not included - strainer options

Max. operating pressure.: 40 bar / 600 psi  
Weight: 1/4"BSPM. 230 g / 8 oz. - 1/4"BSPF. 230 g / 8 oz - 3/8"BSPM. 245 g / 8.5 oz - 1/4"NPTF. 230 g / 8 oz

**Materials:** brass - stainless steel - Buna N - FKM - PVC  
**Use:** on air blast sprayers. Two "OPEN" positions at ±15° from vertical. A click point out each position. Check valve assures efficient and long lasting operations at low and high pressures.

## COME SI ORDINA / HOW TO ORDER

CODICE code	GHIERA cap	PER UGELLI for spray tips	FILTRO strainer	A	B mm	C mm	D mm	Kit RICAMBIO spare parts kit
76.617.29	G3/8 M-Ch20	Ø15 KIT	X			38	10	
76.617.29 A	G3/8 M-Ch20	Ø15 KIT	-			38	10	
76.617.29 B	G3/8 M. ALETTATA 3/8" BSPM. WINGED	Ø15 KIT	-			38	10	
76.617.29 C	G3/8 M. ALETTATA 3/8" BSPM. WINGED	Ø15 KIT	X			38	10	
76.617.30	11/16 16UN-Ch21	Ø15 KIT disc+core	X			40	10	
76.617.30 A	11/16 16UN-Ch21	Ø15 KIT disc+core	-	G1/4M. 1/4" BSPM.	51	40	66	75.302.28
76.617.30 B	11/16 16UN ALETTATA 11/16 16UN WINGED	Ø15 KIT disc+core	-			40	10	
76.617.30 C	11/16 16UN ALETTATA 11/16 16UN WINGED	Ø15 KIT disc+core	X			40	10	
76.617.32	Ø18-Ch24	Ø18 KIT	-			38	10	
76.617.32 D	AD/AC	AD/AC	-			38	10	
76.617.32 15	Ø15-Ch24	ATR/TVI	-			38	10	
<b>FPM/FKM</b> 76.617.69	SENZA GHIERA NO CAP 11/16 16UN	Ø15 KIT disc+core	-	G1/4M. 1/4" BSPM.	51	33	66	90.302.59
76.617.36	Ø18-Ch24	Ø18 KIT	-					
76.617.36 D	AD/AC	AD/AC	-	G3/8M-G1/8F. 3/8" BSPM.-1/8" BSPF.	51	38	66	75.302.28
76.617.36 15	Ø15-Ch24	ATR/TVI	-					
76.617.31	Ø18-Ch24	Ø18 KIT	-			38	10	
76.617.31 D	AD/AC	AD/AC	-			38	10	
76.617.31 15	Ø15-Ch24	ATR/TVI	-			38	10	
76.617.37	1/16 16UN-Ch21	Ø15 KIT disc+core	X	G1/4F. 1/4" BSPF.	62	40	77	75.302.28
76.617.37 A	1/16 16UN-Ch21	Ø15 KIT disc+core	-			40	10	
76.617.37 B	11/16 16UN ALETTATA 11/16 16UN WINGED	Ø15 KIT disc+core	-			40	10	
76.617.37 C	11/16 16UN ALETTATA 11/16 16UN WINGED	Ø15 KIT disc+core	X			40	10	
76.617.40	11/16 16UN-Ch21	Ø15 KIT disc+core	X				10	
76.617.40 A	11/16 16UN-Ch21	Ø15 KIT disc+core	-				10	
76.617.40 B	11/16 16UN ALETTATA 11/16 16UN WINGED	Ø15 KIT disc+core	-	1/4"NPTF.	62	40	77	75.302.28
76.617.40 C	11/16 16UN ALETTATA 11/16 16UN WINGED	Ø15 KIT disc+core	X				10	
76.617.71	Ø15-Ch24	ATR/TVI	-	R1/4M.	51	38	73	75.302.28



**RICAMBI SPARE PARTS :**

- 76.617.29
- 76.617.30
- 76.617.31
- 76.617.31 15
- 76.617.32
- 76.617.32 15
- 76.617.36
- 76.617.36 15
- 76.617.37
- 76.617.40