



M266 - M269 - M270

TENUTA SENZA COLLANTI
SEAL WITHOUT BONDING



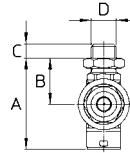
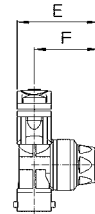
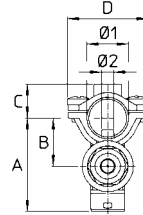
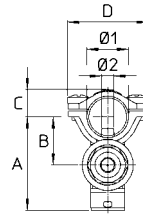
266.616.1



269.616.2



270.616.3



M269
Dado con O Ring
Nut with O Ring

- M266** Standard completo di cavallotto, viti inox, membrana FPM, O Ring
Ghiera ed ugello non compresi
- M269** Standard completo di dado G1/4. con O Ring NBR, membrana FPM
Ghiere ed ugello non compresi
- M270** Standard completo di cavallotto M8, viti inox, membrana FPM, O Ring
Ghiera ed ugello non compresi

Pressione di esercizio max.: 30 bar
Apertura antigoccia: 1 bar
Peso: M266 170 g - M269 125 g - M270 175 g

Materiali: ottone nichelato - acciaio inox - FPM - NBR

Impiego: su barre diserbanti. Ingombri ridotti. Eccellente resistenza alla pressione ed agli urti. Indicato per trattamenti che richiedono elevata penetrazione fogliare. Modello M269 fornito con dado e O Ring per il montaggio del getto sui collettori senza utilizzare collanti.

M266 Standard with clamp, s.steel screws, FKM diaphragm, O Ring
Cap and spray tip not included

M269 Standard 1/4"BSP. nut with Buna N O Ring, FKM diaphragm
Cap and spray tip not included


M270 Standard with M8 threaded clamp, s.steel screws, FKM diaphragm, O Ring
Cap and spray tip not included

Max. operating pressure: 30 bar / 450 psi
Anti drip opens at 1 bar / 15 psi
Weight: M266 170 g / 6 oz - M269 125 g / 4.4 oz - M270 175 g / 6.2 oz

Materials: nickel plated brass - s.steel - FKM - Buna N

Use: on crop protection booms. Compact. Pressure and shock proof. For spraying at higher pressures on post emergence. Model M269 supplied with nut and O Ring to adjust nozzle position on booms. No bonding required.

COME SI ORDINA / HOW TO ORDER

CODICE code	Ø1 mm	Ø2 mm	A mm	B mm	C mm	D mm	E mm	F mm	
266.616.1	1/2" (Ø21.3) - Ø22	Ø7	64	36	15	42	45	32	10
269.616.2	-	-	54	26	6	G1/4M. - 1/4"BSPM.	45	32	10
270.616.3	1/2" (Ø21.3) - Ø22	Ø7	64	36	18	42	45	32	10



GETTI
NOZZLES



UGELLI
SPRAY TIPS



COMPONENTI
PARTS



CATALOGHI
CATALOGUES



IMMAGINI
HI-RES PICTURES

 RICAMBI
SPARE PARTS :

266.616.1
269.616.2
270.616.3