



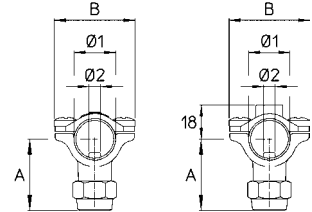
GETTO MORSETTO 1/2" 1/2" CLAMP NOZZLES



265.612.176
265.612.176 20



265.612.179



◀ PAGE 40/46 ▶

Standard nichelati

Completi di ghiera, viti inox e O Ring
Ugello non compreso

Pressione di esercizio max.: 50 bar

Peso: 85 g

Materiali: ottone nichelato - acciaio inox - NBR

Impiego: su gruppi da diserbo.

Standard nickel plated

With cap, stainless steel screws and O Ring
Spray tip not included


Max. operating pressure: 50 bar / 725 psi

Weight: 85 g / 3 oz

Materials: nickel plated brass - stainless steel - Buna N

Use: on spray booms.

COME SI ORDINA / HOW TO ORDER

CODICE code	Ø1	Ø2	FILETTATURA thread	FILETTATURA CAVALLOTTO clamp thread	A mm	B mm	
265.612.176	Ø22 - Ø21.3	Ø7	G3/8M.-3/8" BSPM.	-	38	42	25
265.612.179	Ø22 - Ø21.3	Ø7	G3/8M.-3/8" BSPM.	M8	38	42	25
265.612.176 20	Ø20	Ø7	G3/8M.-3/8" BSPM.	-	38	42	25



GETTI
NOZZLES



UGELLI
SPRAY TIPS



COMPONENTI
PARTS



CATALOGHI
CATALOGUES



IMMAGINI
HI-RES PICTURES



RICAMBI
SPARE PARTS :

265.612.176
265.612.179