

M286 - M287



286.700.6
286.700.6 P7



286.700.6 D
286.700.6 E
286.700.6 F
286.700.6 G



286.700.9



286.700.9 D
286.700.9 F



287.700.12
287.700.12 P7



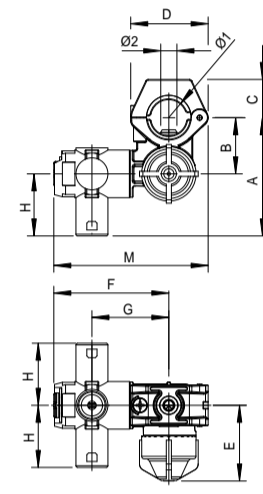
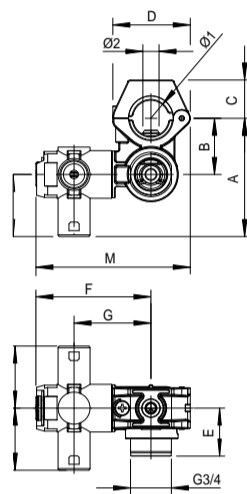
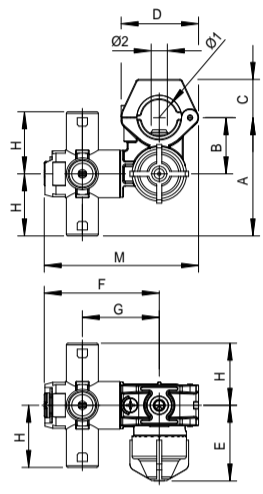
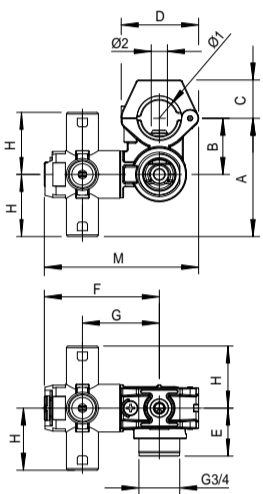
287.700.12 D
287.700.12 E
287.700.12 F
287.700.12 G



287.700.13



287.700.13 D
287.700.13 F




Standard completi di cavalletto e tubetto inox montati, vite autofilettante inox, O Ring
Cavalletto con sede per vite / dado UNI ISO M6
Versioni: M286 quattro ugelli / M287 tre ugelli
Senza modulo antigoccia, con filettatura G3/4M. per montaggio sistema di chiusura pneumatico
Con antigoccia a membrana EPDM
Con antigoccia a membrana FPM
Per tubo Ø1/2" (Ø21.3 e Ø22 mm)
Per tubo Ø3/4"
Attacco Ø7 e Ø9.5 mm


Ghiere ed ugelli non compresi
 Pressione di esercizio max.: 15 bar
 Apertura antigoccia: 1 bar
 Peso: con antigoccia 120 g – senza antigoccia 110 g
Materiali: materiali plastici ad alta resistenza – acciaio inox - tenute in EPDM e FPM
Impiego: su barre diserbanti. Dimensioni compatte. Portaugello parallelo al tubo e all'antigoccia. Versioni per il montaggio di sistemi di chiusura pneumatici. Montaggio rapido. Eccellente resistenza alla pressione ed agli urti. Tre / quattro posizioni di lavoro con chiusure intermedie. Tubetto di accoppiamento alla barra in acciaio inox. Modelli con antigoccia tarato in produzione per ottenere uniformità di funzionamento. Disegno del modulo antigoccia e delle membrane ottimizzato per resistere ai colpi d'ariete.

Standard supplied with assembled clamp and s.steel inlet connection, s. steel self tapping screw, O Ring
Clamp with seat for ISO M6 nut / screw
Models: M286 four spray tips holder / M287 three spray tips holder
Without check valve unit, 3/4"BSPM. threaded for pneumatic shut off system
Check valve with EPDM diaphragm
Check valve with FKM diaphragm
Ø1/2" pipes (Ø21.3 and Ø22 mm)
Ø3/4" pipes
Ø7 and Ø9.5 mm pipe connection


Caps and spray tips not included
 Max. operating pressure: 15 bar / 220 psi
 Check valve opens at: 1 bar
 Weight: with check valve 120 g / 42 oz – without check valve 110 g / 39 oz
Materials: high resistance plastic materials – stainless steel – EPDM and FKM seals
Use: on crop protection booms. Very compact. Spray tips holder parallel to pipe and check valve. Models ready to assemble pneumatic shut off systems. Easy mounting. Pressure and shock proof. Three / four spraying outlets with shut off between each position. Stainless steel inlet connection. Models with check valve: valve is factory set for even operations. Shock resistant check valve to stand water hammers and heavy duty applications.

COME SI ORDINA / HOW TO ORDER

CODICE code	MEMBRANA diaphragm	Ø1 mm	Ø2 mm	A mm	B mm	C mm	D mm	E mm	F mm	G mm	H mm		KIT RICAMBIO spare parts kit
286.700.6	-		9.5					28.2					
286.700.6 D	EPDM		9.5					44.5					
286.700.6 E	EPDM	1/2"	7	69.5	33	22.5	45.5	44.5	67.5	45	36.5	10	280.302.34
286.700.6 F	FPM - FKM		9.5					44.5					
286.700.6 G	FPM - FKM		7					44.5					
286.700.6 P7	-		7					28.2					
286.700.9	-							28.2					
286.700.9 D	EPDM	3/4"	9.5	69.5	33	22.5	45.5	44.5	67.5	45	36.5	10	280.302.34
286.700.9 F	FPM - FKM							44.5					

 **RICAMBI SPARE PARTS:** 286.700.6
286.700.9

COME SI ORDINA / HOW TO ORDER

CODICE code	MEMBRANA diaphragm	Ø1 mm	Ø2 mm	A mm	B mm	C mm	D mm	E mm	F mm	G mm	H mm		KIT RICAMBIO spare parts kit
287.700.12	-		9.5					28.2					
287.700.12 D	EPDM		9.5					44.5					
287.700.12 E	EPDM	1/2"	7	69.5	33	22.5	45.5	44.5	67.5	45	36.5	10	280.302.34
287.700.12 F	FPM - FKM		9.5					44.5					
287.700.12 G	FPM - FKM		7					44.5					
287.700.12 P7	-		7					28.2					
287.700.13	-							28.2					
287.700.13 D	EPDM	3/4"	9.5	69.5	33	22.5	45.5	44.5	67.5	45	36.5	10	280.302.34
287.700.13 F	FPM - FKM							44.5					

 **RICAMBI SPARE PARTS:** 287.700.12
287.700.13

