



M74

POSIZIONAMENTO
E TENUTA SENZA COLLANTI
ADJUST NOZZLE POSITION
AND SEAL WITHOUT BONDING



74.610.109
74.610.109 15



74.610.111
74.610.111 15



74.610.115



G1/4M.-1/4\"/>



74.610.118



74.610.116



74.610.108



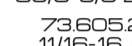
256.605.7
G3/8 3/8\"/>



73.605.68
11/16-16 UN



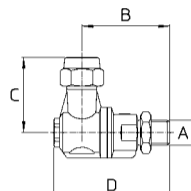
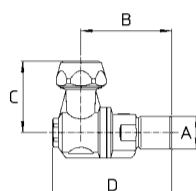
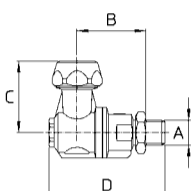
73.605.27
G3/8 3/8\"/>



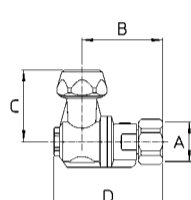
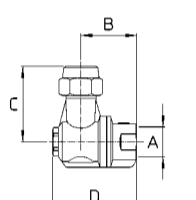
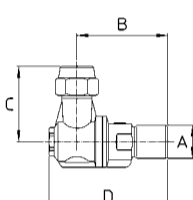
73.605.28
11/16-16 UN



74.610.19



75.605.46 Ø15
75.605.47 Ø18



Standard: versioni Ø18 e Ø15 complete di ghiera - ugello non compreso
versioni G3/8 e 11/16-16UN complete di ghiera - ugello non compreso - opzioni con filtro

Pressione di esercizio max.: 40 bar
Peso: G1/4M. 160 g - G1/4F. 160 g - 1/4\"/>

Materiali: ottone - acciaio inox - NBR - PVC

Impiego: su atomizzatori. Due posizioni "APERTO" inclinate 15° dalla verticale. Ogni posizione è segnalata da uno scatto.

Standard: Ø18 and Ø15 models with cap - spray tip not included
3/8\"/>

Max. operating pressure.: 40 bar / 600 psi
Weight: 1/4\"/>

Materials: brass - stainless steel - Buna N - PVC

Use: on air blast sprayers. Two "OPEN" positions at ±15° from vertical. A click point out each position.

COME SI ORDINA / HOW TO ORDER

CODICE code	GHIERA cap	PER UGELLI for spray tips	FILTRO strainer	A	B mm	C mm	D mm		KIT RICAMBIO spare parts kit
74.610.109	Ø18-Ch24	Ø18 KIT	-	G1/4M. 1/4\"/>					
74.610.109 15	Ø15-Ch24	ATR/TVI	-	G1/4F. 1/4\"/>					
74.610.111	Ø18-Ch24	Ø18 KIT	-	G1/4F. 1/4\"/>					
74.610.111 15	Ø15-Ch24	ATR/TVI	-	G1/4M. 1/4\"/>					
74.610.115	G3/8M.-Ch20	Ø15 KIT	X	G1/4M. 1/4\"/>					
74.610.115 A	G3/8M.-Ch20	Ø15 KIT	-	G1/4M. 1/4\"/>					
74.610.115 B	G3/8M. ALETTATA 3/8\"/>								
74.610.115 C	G3/8M. ALETTATA 3/8\"/>								
74.610.108	G3/8M.-Ch20	Ø15 KIT	X	G1/4F. 1/4\"/>					
74.610.108 A	G3/8M.-Ch20	Ø15 KIT	-	G1/4F. 1/4\"/>					
74.610.108 B	G3/8M. ALETTATA 3/8\"/>								
74.610.108 C	G3/8M. ALETTATA 3/8\"/>								
74.610.118	11/16 16UN-Ch21	Ø15 KIT disc+core	X	G1/4M. 1/4\"/>					
74.610.118 A	11/16 16UN-Ch21	Ø15 KIT disc+core	-	G1/4M. 1/4\"/>					
74.610.118 B	11/16 16UN ALETTATA WINGED	Ø15 KIT disc+core	-	G1/4M. 1/4\"/>					
74.610.118 C	11/16 16UN ALETTATA WINGED	Ø15 KIT disc+core	X	G1/4M. 1/4\"/>					
74.610.116	11/16 16UN-Ch21	Ø15 KIT disc+core	X	1/4NPTF.					
74.610.116 A	11/16 16UN-Ch21	Ø15 KIT disc+core	-	1/4NPTF.					
74.610.116 B	11/16 16UN ALETTATA WINGED	Ø15 KIT disc+core	-	1/4NPTF.					
74.610.116 C	11/16 16UN ALETTATA WINGED	Ø15 KIT disc+core	X	1/4NPTF.					
74.610.19	Ø15-Ch24	ATR/TVI	-	M18x1.5F-Ø9					



GETTI
NOZZLES



UGELLI
SPRAY TIPS



COMPONENTI
PARTS



CATALOGHI
CATALOGUES



IMMAGINI
HI-RES PICTURES



RICAMBI
SPARE PARTS :

74.610.108
74.610.109
74.610.111

74.610.115
74.610.116
74.610.118