



M70 Ø18 - Ø15

**POSIZIONAMENTO
E TENUTA SENZA COLLANTI
ADJUST NOZZLE POSITION
AND SEAL WITHOUT BONDING**



70.610.10
70.610.2



70.610.15
70.610.3



70.610.16
70.610.6



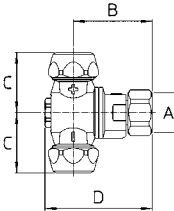
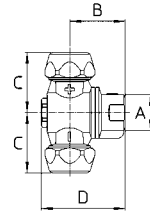
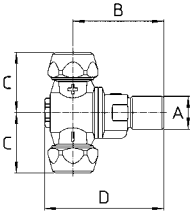
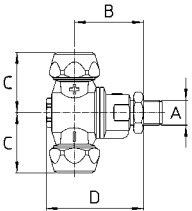
70.610.5
70.610.4



720.610.17



G1/4M.-1/4" BSPM
Dado con O Ring
Nut with O Ring



Standard completo di ghiera - ugelli non compresi

Pressione di esercizio max.: 40 bar

Peso: G1/4M. 190 g - G1/4F. 190 g - G3/8M. 205 g - 1/4"NPTF 160 g - M18x1.5 202 g

Materiali: ottone - acciaio inox - NBR - PVC

Impiego: su atomizzatori. Due ugelli selezionabili con posizioni intermedie di chiusura. Ingombri ridotti. Due posizioni "APERTO" inclinate ±15° dalla verticale. Ogni posizione è segnalata da uno scatto.

Standard with caps - spray tips not included


Max. operating pressure: 40 bar / 600 psi

Weight: 1/4"BSPM. 190 g / 6.7 oz. - 1/4"BSPF. 190 g / 6.7 oz - 3/8"BSPM. 205 g / 7.2 oz - 1/4"NPTF. 160 g / 5.7 oz - M18x1.5 202 g / 7.1 oz

Materials: brass - stainless steel - Buna N - PVC

Use: on air blast sprayers. Very compact. rollover to select spray tips with two shut off positions. Two "OPEN" positions at ±15° from vertical. A click point out each position.

COME SI ORDINA / HOW TO ORDER

	CODICE code	GHIERA cap	PER UGELLI for spray tips	A	B mm	C mm	D mm		KIT RICAMBIO spare parts kit
Ø18	70.610.10	2xØ18	Ø18 KIT	G1/4M.-1/4"BSPM.	37	32	52	10	70.302.27
	70.610.10 A	1xØ18-1xØ15	Ø18 KIT ATR/TVI						
	70.610.10 B	2xØ15	ATR/TVI						
	70.610.15	2xØ18	Ø18 KIT	G3/8M.-G1/8F. 3/8"BSPM.-1/8"BSPF.	37	32	52	10	70.302.27
	70.610.15 A	1xØ18-1xØ15	Ø18 KIT ATR/TVI						
	70.610.15 B	2xØ15	ATR/TVI						
70.610.16	2xØ18	Ø18 KIT	G1/4F.-1/4"BSPF.	48	32	63	10	70.302.27	
70.610.16 A	1xØ18-1xØ15	Ø18 KIT ATR/TVI							
70.610.16 B	2xØ15	ATR/TVI							
Ø15	70.610.5	2xØ18	Ø18 KIT	1/4NPTF.	30	32	45	10	70.302.27
	70.610.5 A	1xØ18-1xØ15	Ø18 KIT ATR/TVI						
	70.610.5 B	2xØ15	ATR/TVI						
	70.610.2	2xØ15	Ø15 KIT ATR/TVI	G1/4M.-1/4"BSPM.	37	32	52	10	70.302.27
	70.610.3	2xØ15	Ø15 KIT ATR/TVI						
	70.610.4	2xØ15	Ø15 KIT ATR/TVI						
	70.610.6	2xØ15	Ø15 KIT ATR/TVI	G1/4F.-1/4"BSPF.	48	32	63	10	70.302.27
720.610.17	2xØ15	Ø15 KIT ATR/TVI							
				M18x1.5F.-Ø9	42	32	57	1000	70.302.27



GETTI
NOZZLES



UGELLI
SPRAY TIPS



CATALOGHI
CATALOGUES



IMMAGINI
HI-RES PICTURES



RICAMBI
SPARE PARTS :

70.610.2
70.610.3
70.610.4

70.610.5
70.610.6
70.610.10

70.610.15
70.610.16
720.610.17