



# M84



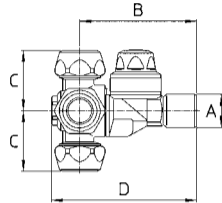
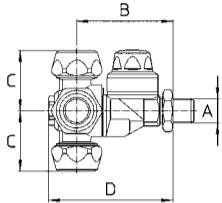
84.617.22



84.617.23



84.617.24



**POSIZIONAMENTO  
E TENUTA SENZA COLLANTI  
ADJUST NOZZLE POSITION  
AND SEAL WITHOUT BONDING**



**G1/4M.-1/4\"/>**



**Kit ghiera AD/AC  
AD/AC cap kit**

**Standard completo di ghiera - ugelli non compresi**

Pressione di esercizio max.: 30 bar

Peso: G1/4M. 310 g - G1/4F. 310 g - G3/8M. 325 g

**Materiali:** ottone - acciaio inox - NBR - FPM - PVC

**Impiego:** su atomizzatori. Tre ugelli selezionabili con una posizione di chiusura. Antigoccia resistente ed efficace a bassa e ad alta pressione.

**Standard with caps - spray tips not included**


Max. operating pressure.: 30 bar / 435 psi

Weight: 1/4\"/>

**Materials:** brass - stainless steel - Buna N - FKM - PVC

**Use:** on air blast sprayers. Three rollover spray tips with one shut off position. Check valve assures efficient and long lasting operations at low and high pressures.

## COME SI ORDINA / HOW TO ORDER

CODICE code	GHIERA cap	PER UGELLI for spray tips	A	B mm	C mm	D mm		KIT RICAMBIO spare parts kit
<b>84.617.22</b>	3xATR/TVI	ATR/TVI	G1/4M. 1/4\"/>					
<b>84.617.22 A</b>	1xØ18-2xØ15	Ø18 KIT-ATR/TVI		51	32	66	10	84.302.29
<b>84.617.22 B</b>	2xØ18-1xØ15	Ø18 KIT-ATR/TVI						
<b>84.617.22 C</b>	3xØ18	Ø18 KIT						
<b>84.617.22 D</b>	3xAD/AC	AD/AC						
<b>84.617.22 E</b>	2xAD/AC-1xØ18	AD/AC-Ø18 KIT						
<b>84.617.22 F</b>	1xAD/AC-2xØ18	AD/AC-Ø18 KIT						
<b>84.617.22 G</b>	2xAD/AC-1xØ15	AD/AC-ATR/TVI						
<b>84.617.22 H</b>	1xAD/AC-2xØ15	AD/AC-ATR/TVI						
<b>84.617.23</b>	3xATR/TVI	ATR/TVI	G3/8M.-G1/8F. 3/8\"/>					
<b>84.617.23 A</b>	1xØ18-2xØ15	Ø18 KIT-ATR/TVI		51	32	66	10	84.302.29
<b>84.617.23 B</b>	2xØ18-1xØ15	Ø18 KIT-ATR/TVI						
<b>84.617.23 C</b>	3xØ18	Ø18 KIT						
<b>84.617.23 D</b>	3xAD/AC	AD/AC						
<b>84.617.23 E</b>	2xAD/AC-1xØ18	AD/AC-Ø18 KIT						
<b>84.617.23 F</b>	1xAD/AC-2xØ18	AD/AC-Ø18 KIT						
<b>84.617.23 G</b>	2xAD/AC-1xØ15	AD/AC-ATR/TVI						
<b>84.617.23 H</b>	1xAD/AC-2xØ15	AD/AC-ATR/TVI						
<b>84.617.24</b>	3xATR/TVI	ATR/TVI	G1/4F. 1/4\"/>					
<b>84.617.24 A</b>	1xØ18-2xØ15	Ø18 KIT-ATR/TVI		62	32	77	10	84.302.29
<b>84.617.24 B</b>	2xØ18-1xØ15	Ø18 KIT-ATR/TVI						
<b>84.617.24 C</b>	3xØ18	Ø18 KIT						
<b>84.617.24 D</b>	3xAD/AC	AD/AC						
<b>84.617.24 E</b>	2xAD/AC-1xØ18	AD/AC-Ø18 KIT						
<b>84.617.24 F</b>	1xAD/AC-2xØ18	AD/AC-Ø18 KIT						
<b>84.617.24 G</b>	2xAD/AC-1xØ15	AD/AC-ATR/TVI						
<b>84.617.24 H</b>	1xAD/AC-2xØ15	AD/AC-ATR/TVI						



**GETTI  
NOZZLES**



**UGELLI  
SPRAY TIPS**



**CATALOGHI  
CATALOGUES**



**IMMAGINI  
HI-RES PICTURES**



**RICAMBI  
SPARE PARTS :**

**84.617.22**

**84.617.23**

**84.617.24**